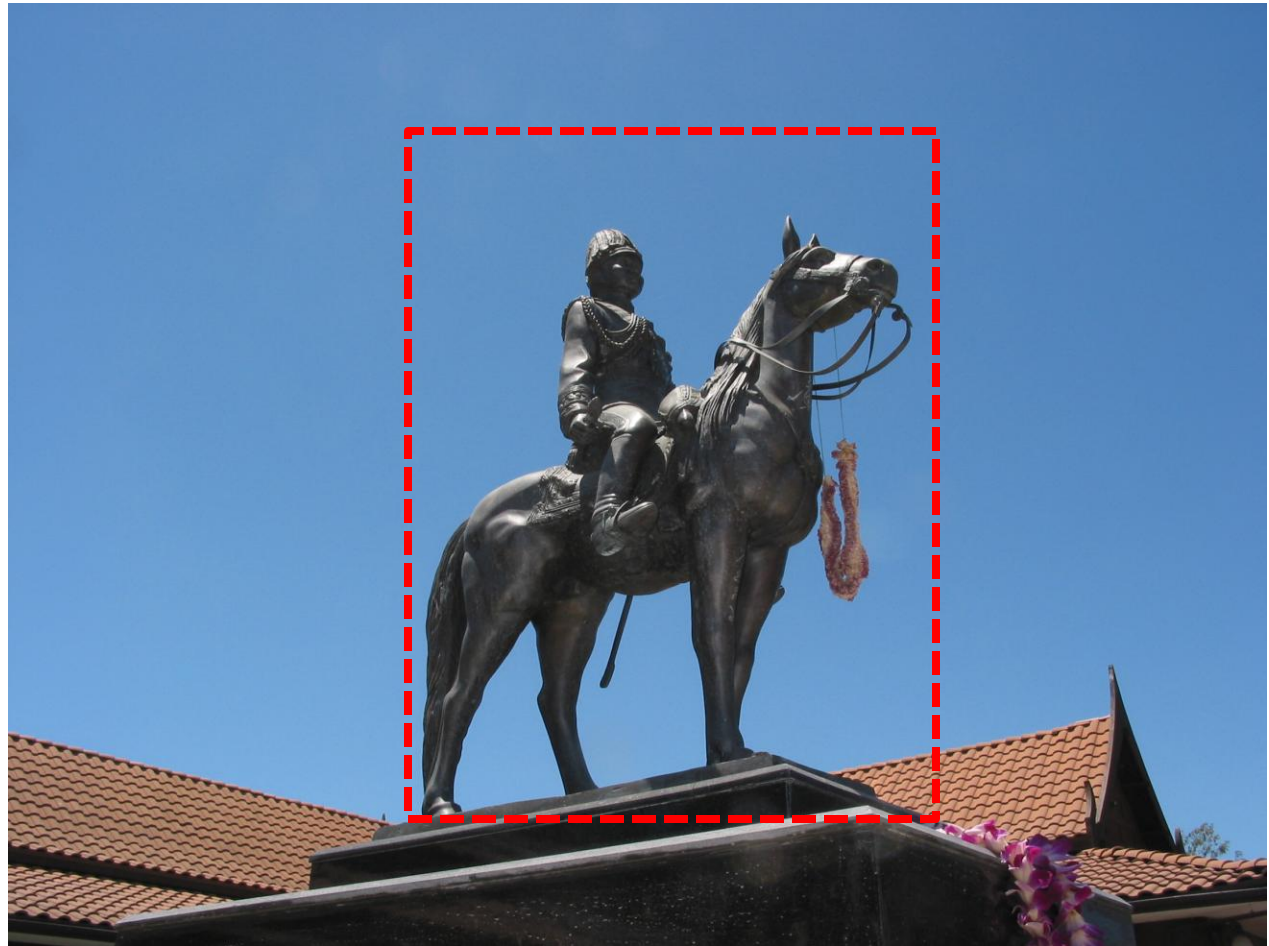


# Cloning Inside a Selection

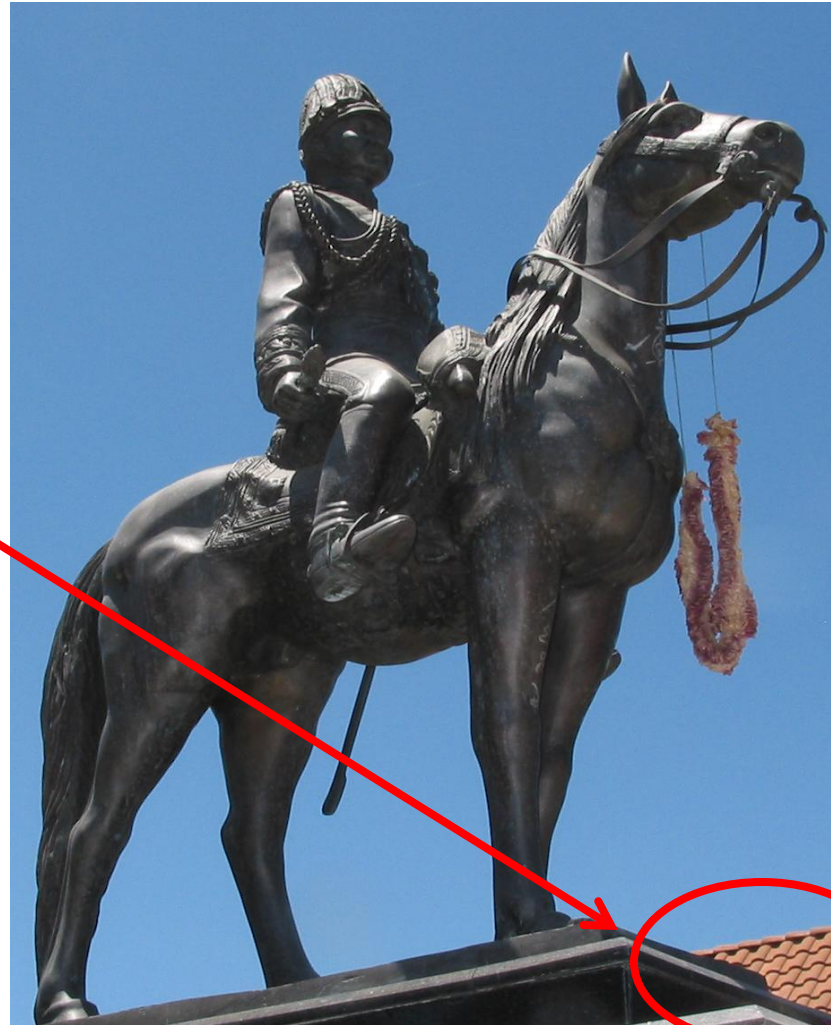
Crop image as  
desired



# Cloning Inside a Selection

Crop image as desired

Zoom in on area of interest

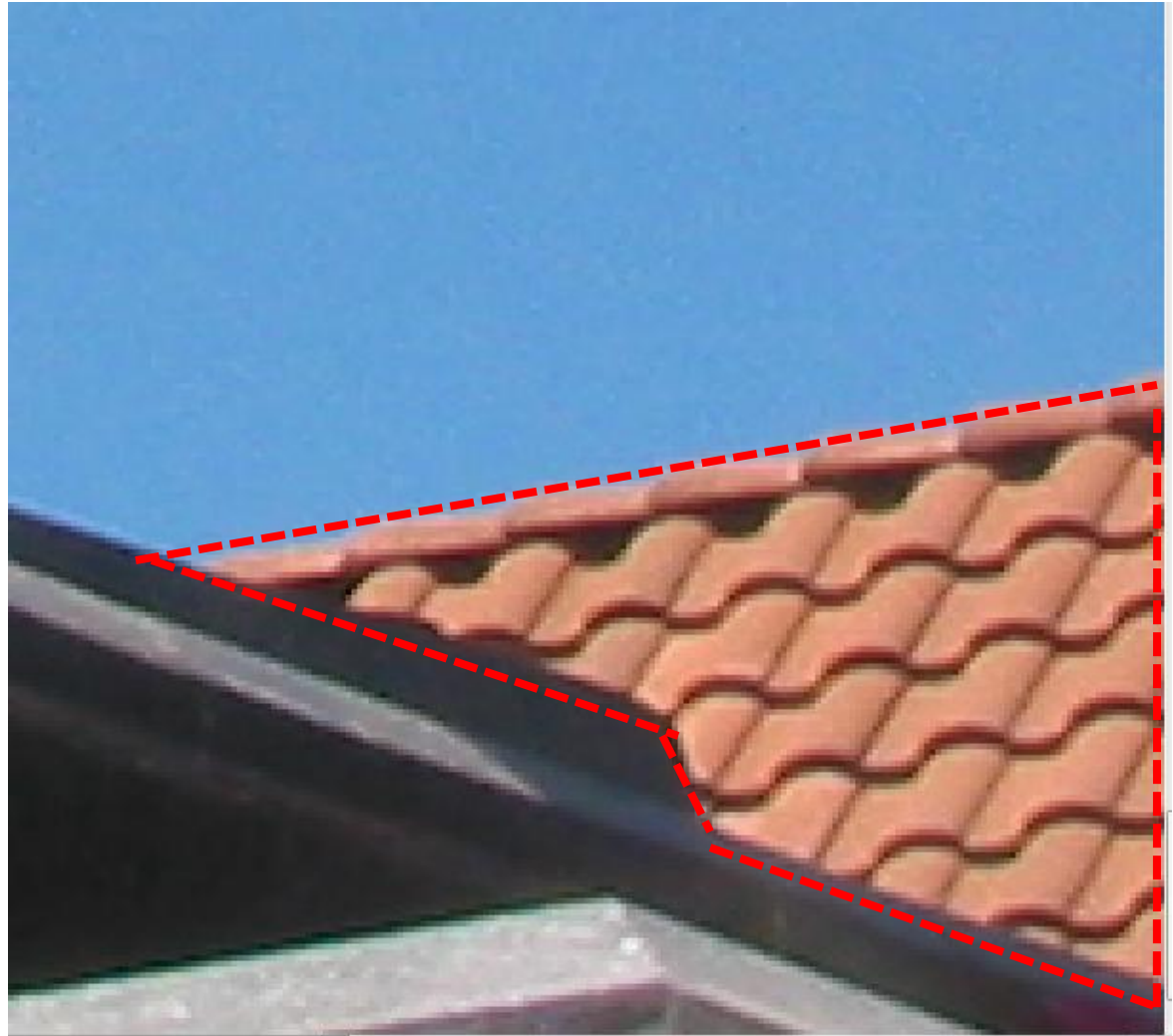
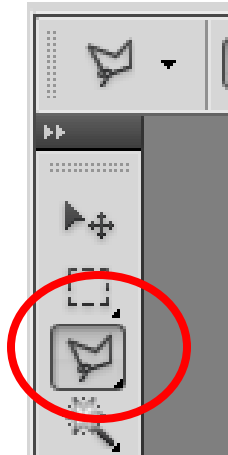


# Cloning Inside a Selection

Crop image as desired

Zoom in on area of interest

Use Polygonal Lasso Tool to select roof



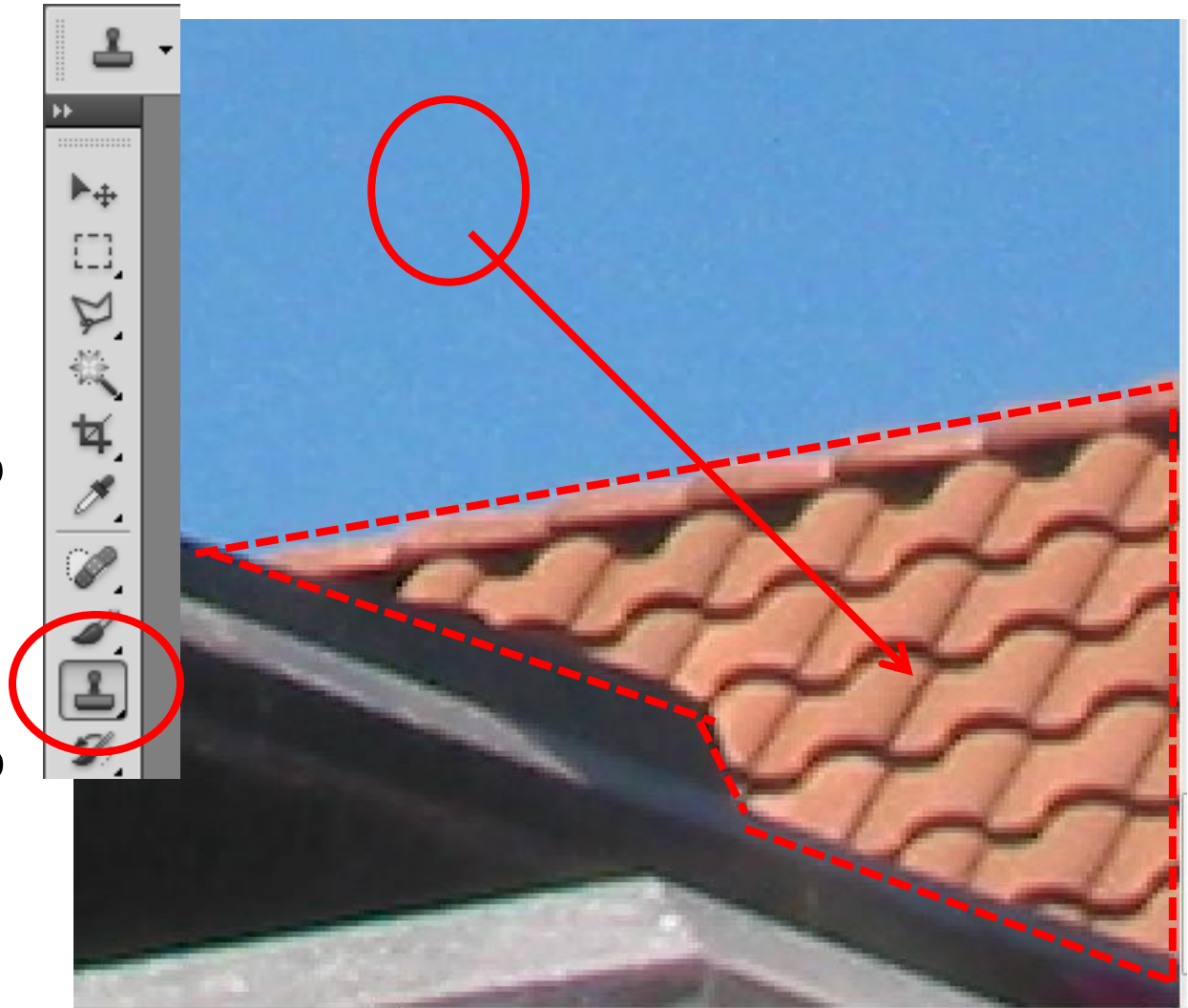
# Cloning Inside a Selection

Crop image as desired

Zoom in on area of interest

Use Polygonal Lasso Tool to select roof

With the selection still active use the Clone Stamp Tool to clone the sky into the selection



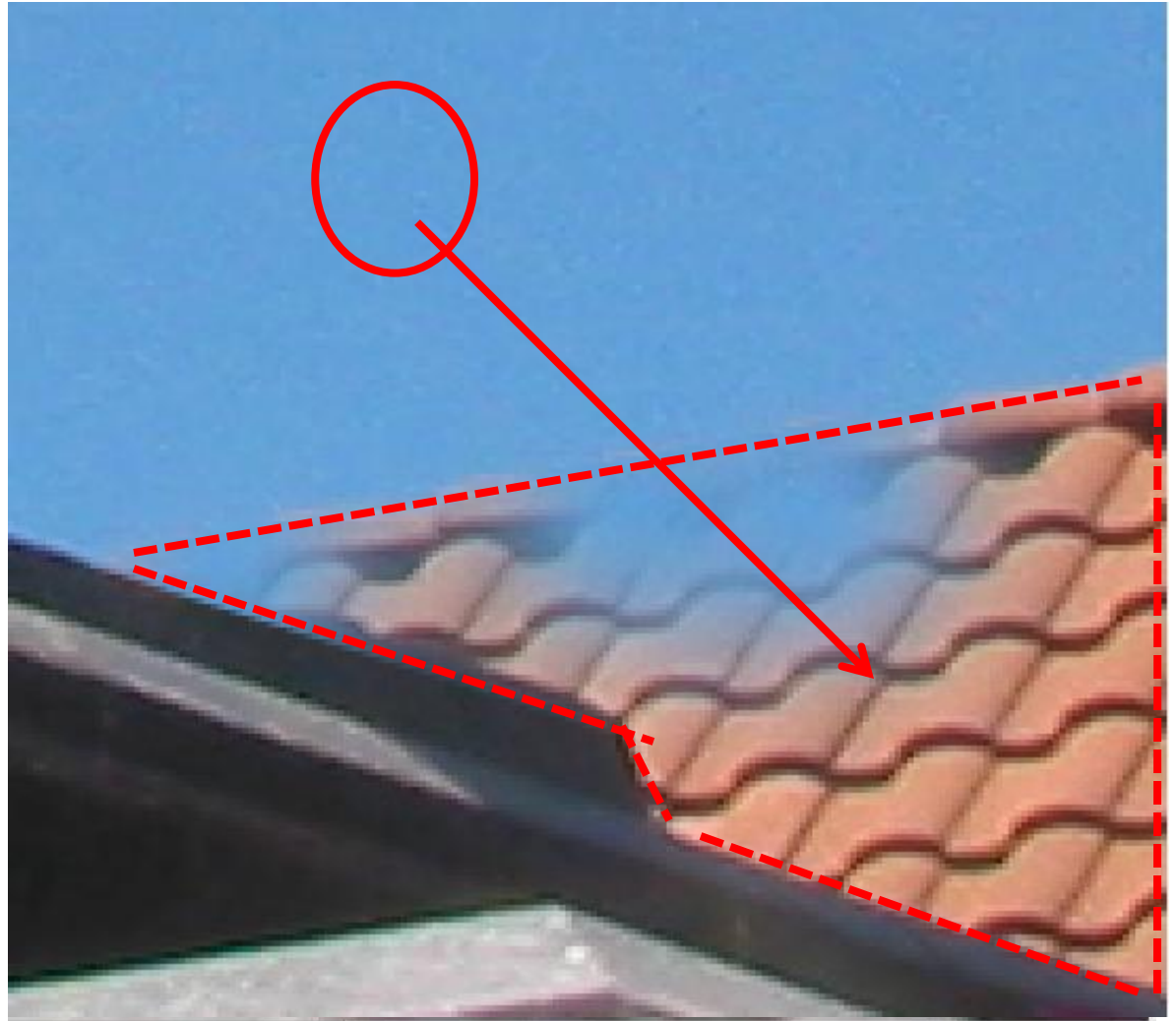
# Cloning Inside a Selection

Crop image as desired

Zoom in on area of interest

Use Polygonal Lasso Tool to select roof

With the selection still active use the Clone Stamp Tool to clone the sky into the selection



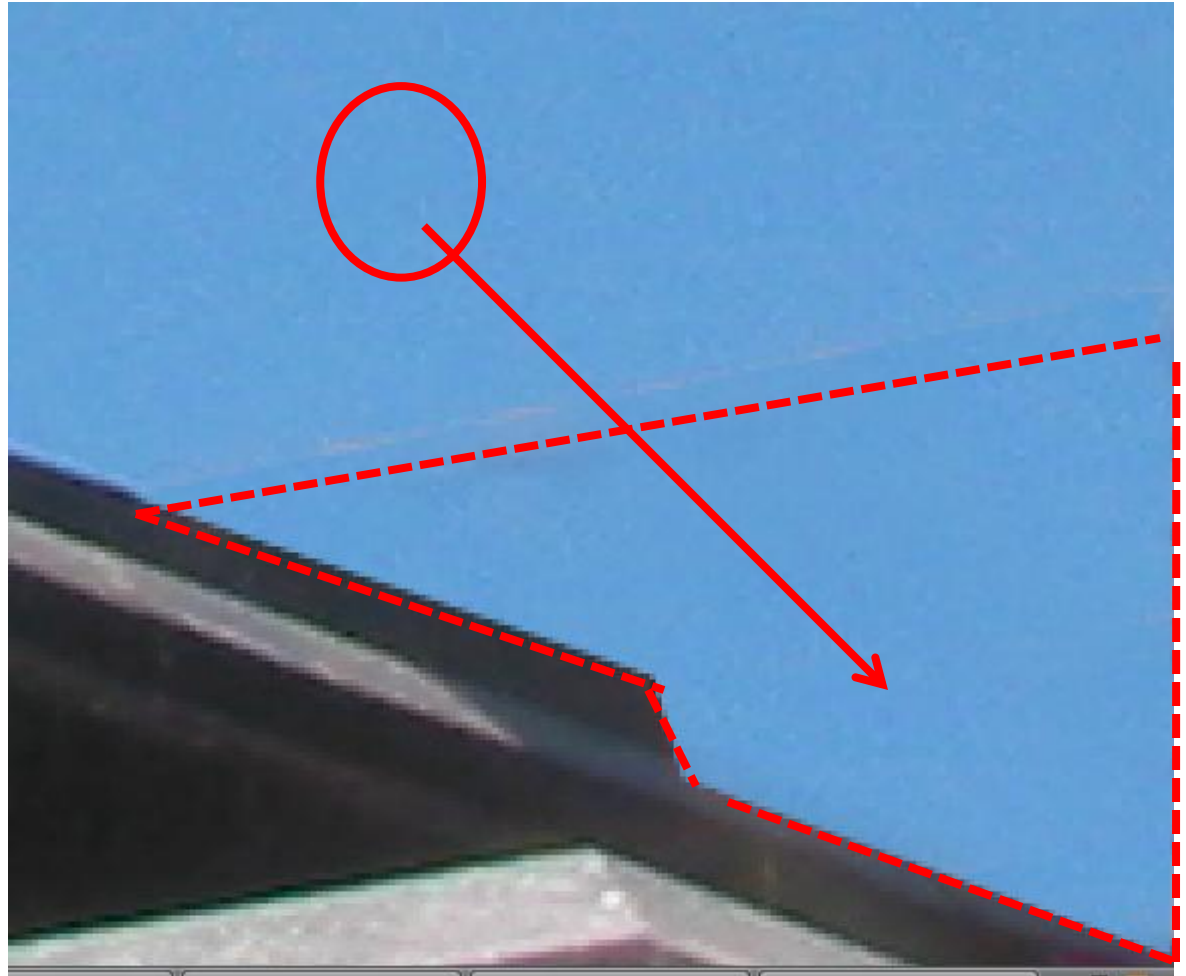
# Cloning Inside a Selection

Crop image as desired

Zoom in on area of interest

Use Polygonal Lasso Tool to select roof

With the selection still active use the Clone Stamp Tool to clone the sky into the selection



# Cloning Inside a Selection

This technique can be used on any selection using any of the selection tools.

Once a selection has been made any adjustments (i.e., levels, curves, hue & saturation, etc) will be limited to the boundaries of the selection.

